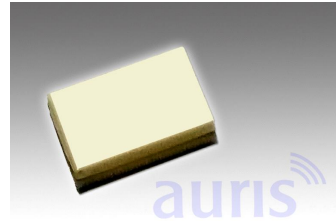


Features AC Series

- SMD
- High reliability
- Ultra thin and small leadless type
- For high mechanical demands available

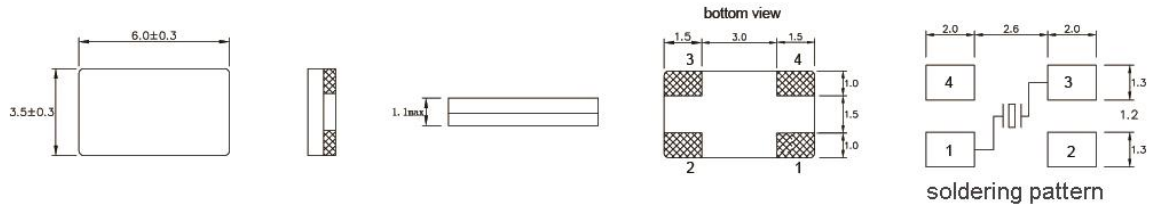


AC6035/4

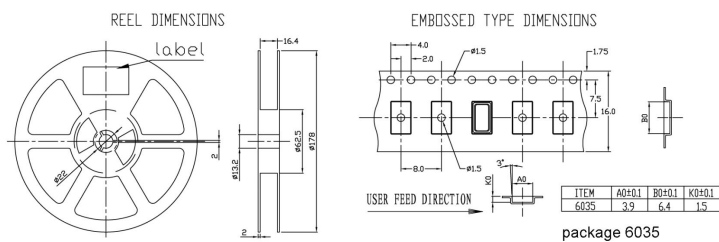
Specification

Type	AC6035/4	ESR max.
Frequency Range fundamental	8,0MHz ~ 40,0 MHz (AT cut)	8,0MHz ~ 10,0MHz = 100 Ohm
Frequency Range over tone	-	10,1MHz ~ 12,0MHz = 80 Ohm
Frequency Tolerance at 25°C	available $\pm 20 \sim \pm 50$ ppm	12,1MHz ~ 16,0MHz = 60 Ohm
Temperature Range	0°C ~ +70°C, or order code	16,0MHz ~ 40,0MHz = 30 Ohm
Load Capacitance CL	available 10pF ~ 32pF, SR	
Shunt Capacitance C0	7pF max.	
Aging	± 5 ppm/year max	
Storage Temperature	-55°C - +125°C	Temp. Tolerance (ppm)
Drive Level	100 μ W max.	-20°C ~ +70°C available $\pm 20 \sim \pm 50$
RoHS	compliant	-40°C ~ +85°C available $\pm 20 \sim \pm 50$
Contents Of Reel	1000 pcs	-40°C ~ +125°C ± 70

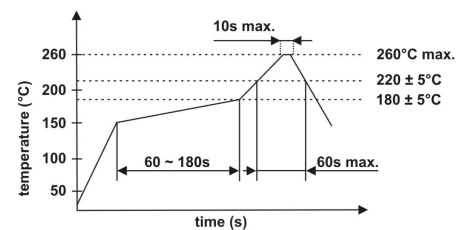
Drawing (mm)



Tape dimension (mm)



Soldering profile



Order code

Q	- 20.000000M	- AC6035/4	- F	- 30	- 50	- D	- 10	- TR
Part	Frequency	Package	Mode of oscillation	Frequency tolerance	Temperature tolerance	Temperature range	Load capacitance	Option
Q=Quartz	M=MHz	AC6035/4	F=fund.	\pm ppm (25°C)	\pm ppm (Temp. range)	A= 0°C ~ +70°C B= -10°C ~ +60°C C= -10°C ~ +70°C D= -20°C ~ +70°C E= -40°C ~ +85°C F= -40°C ~ +105°C G= -40°C ~ +125°C	pF SR=series	TR=Tape and reel X=Special options
		/4 = 4 pads						