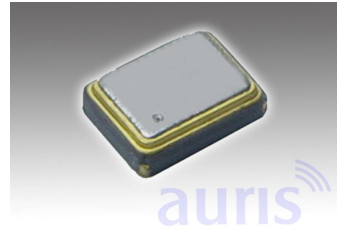


### Features

- Small size 3,2x2,5mm
- Temperature-compensated
- High accuracy

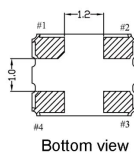
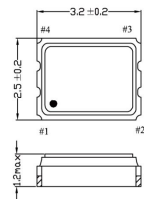


### ATCQO3225

### Specification

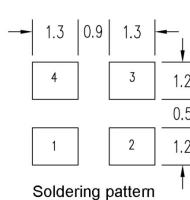
Type	ATCQO3225 Clipped Sine Wave	
Frequency Range	8,00MHz ~ 52,00MHz	
Frequency Tol. (25°C±3°C)	±0,5ppm, ±1,0ppm, ±1,5ppm, ±2,0ppm, ±2,5ppm	Frequency Stability
Power Supply (Vdd)	1,8V; 2,5V; 3,0V; 3,3V	vs. operating Temp. (ppm): ±0,5; ±1,0; ±1,5; ±2,0; ±2,5
Supply Current (Idd)	8,00MHz ~ 52,00MHz = 2,5mA max.	vs. Voltage Change (±5%) (ppm): ±0,3
Operating Temperature Range	0°C ~ +70°C ~ -40°C ~ +85°C	vs Load Change (±5%) (ppm): ±0,3
Output Load	10k ohms // 10pF	vs Aging (first Year): (ppm): ±1,0
Output Voltage	0,8Vp-p min.	
Start Up Time	10ms max. <5ms typical	
Storage Temperature	-40°C - +85°C	
RoHS	compliant	
Contents Of Reel	3000 pcs	

### Drawing (mm)



PIN	CONNECTION
1	GROUND OR OPEN*
2	GROUND
3	OUTPUT
4	VDD

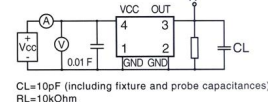
\*Please contact auris-sales for further information.



Soldering pattern

### Test Circuit/Waveform

#### SINE TEST CIRCUIT



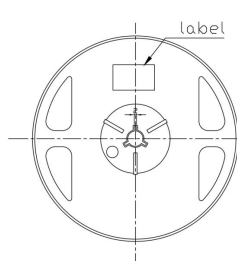
CL=10pF (including fixture and probe capacitances)  
RL=10kOhm

#### TYPICAL CLIPPED SINE WAVE FORM

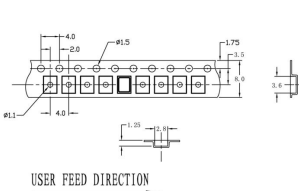


### Tape dimension (mm)

#### REEL DIMENSIONS

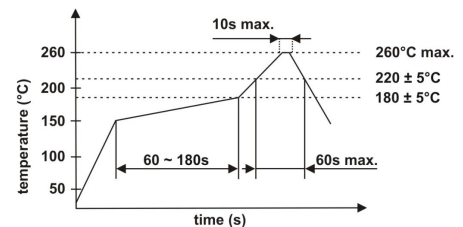


#### EMBOSSED TYPE DIMENSIONS



package 3225

### Soldering profile



### Order code

Part	Frequency	Type/Package	Tolerance 25°C	Tolerance	Voltage	Temperature	Option
O=Oscillator	M=MHz	ATCQO=	±ppm	±ppm	3,3=3,3Volt	A= 0°C ~ +70°C	TR=Tape and reeled
		Temperature controlled QO			3,0=3,0Volt	B= -10°C ~ +60°C	
		3225=3,2x2,5mm			2,8=2,8Volt	C= -10°C ~ +70°C	
					2,5=2,5Volt	D= -20°C ~ +70°C	
					2,0=2,0Volt	E= -40°C ~ +85°C	X=Special options
					1,8=1,8Volt		

Please mention the output signal clipped sine wave when ordering.