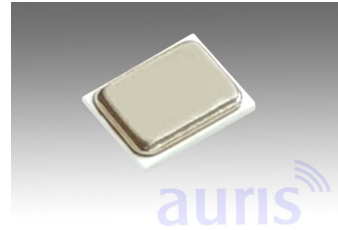


Features

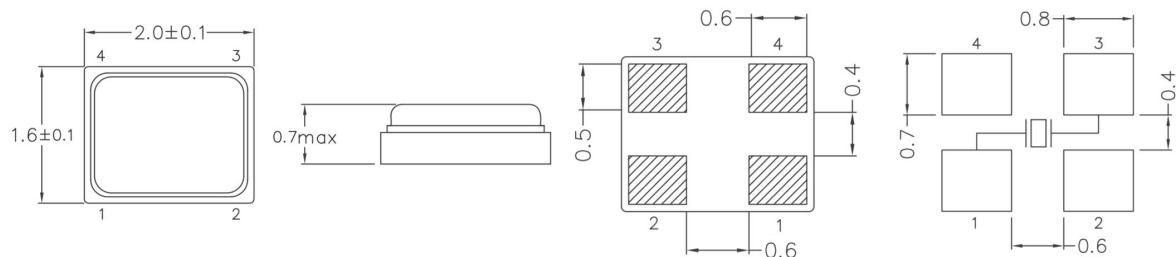
- SMD
- High reliability
- More choices for quick solutions
- Ultra thin and small leadless type



Specification

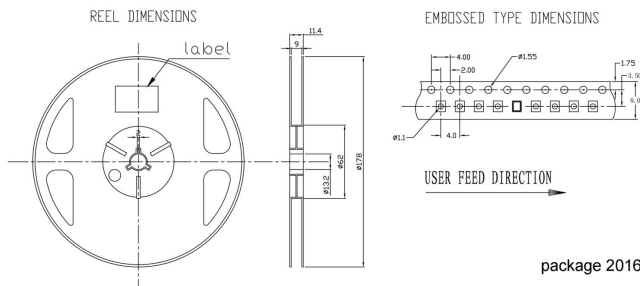
Type	CM2016/4	
Frequency Range fundamental	16,0MHz ~ 54,0MHz (AT cut)	ESR (max.)
Frequency Range over tone	-	16,0MHz ~ 20,0MHz = 250 Ohm
Frequency Tolerance at 25°C±5°C	standard ±10ppm; available ±10 ~ ±30ppm	20,1MHz ~ 23MHz = 150 Ohm
Temperature Range	-20°C ~ +70°C, or order code	23,1MHz ~ 32,0MHz = 100 Ohm
Load Capacitance CL	standard 6pF; available 6pF ~ 30pF /SR	32,1MHz ~ 54,0MHz = 80 Ohm
Shunt Capacitance C0	2,0pF max.	
Aging	±5 ppm/year max.	
Storage Temperature	-55°C - +125°C	Temp. Tolerance (ppm)
Drive Level	50uW typ.	-20°C ~ +70°C standard ±30 available ±10 ~ ±50
RoHS	compliant	-40°C ~ +85°C standard ±50 available ±15 ~ ±50
Contents Of Reel	3000 pcs	-40°C ~ +105°C on request

Drawing (mm)

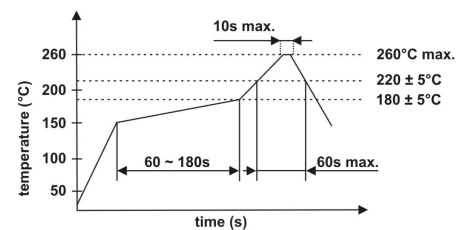


Tape dimension (mm)

Soldering profile



package 2016



Order code

Q	- 28.000000M - CM2016/4	- F	- 30	- 30	- A	- 12	- TR	
Part	Frequency	Package	Mode of oscillation	Frequency tolerance	Temperature tolerance	Temperature range	Load capacitance	Option
Q=Quartz	M=MHz	CM2016/4	F=fund.	±ppm (25°C)	±ppm (Temp. range)	A= 0°C ~ +70°C B= -10°C ~ +60°C C= -10°C ~ +70°C D= -20°C ~ +70°C E= -40°C ~ +85°C	pF	TR=Tape and reel X=Special options
		/4 = 4 pads						