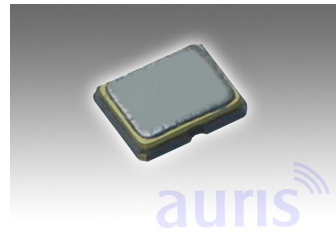


Features HC Series

- SMD
- High reliability
- Application: Bluetooth, wireless LAN
- Ultra thin and small leadless type

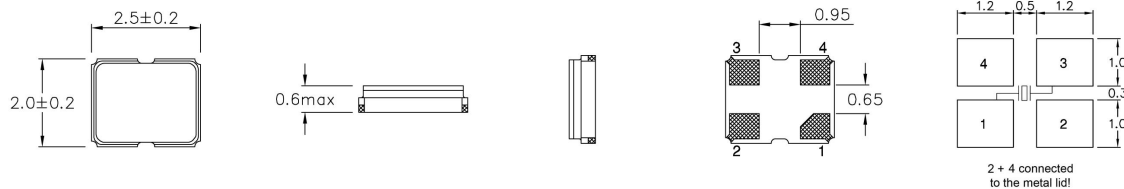


HC2520/4

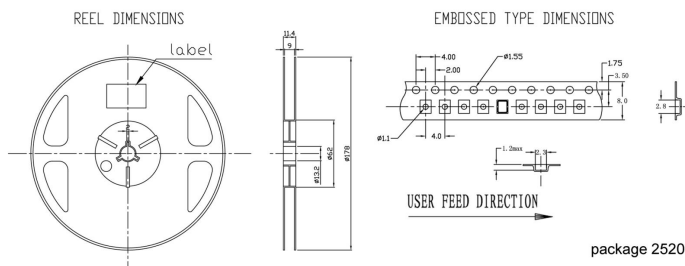
Specification

Type	HC2520/4	ESR max.
Frequency Range fundamental	12,000 MHz ~ 80,000 MHz (AT cut)	12,0MHz ~ 15,9MHz = 180 Ohm
Frequency Range over tone	-	16,0MHz ~ 26,0MHz = 150 Ohm
Frequency Tolerance at 25°C±5°C	standard ±30ppm; available ±10 ~ ±50ppm	26,1MHz ~ 35,0MHz = 100 Ohm
Temperature Range	0°C ~ +70°C, or order code	35,1MHz ~ 80,0MHz = 60 Ohm
Load Capacitance CL	standard 10pF; available 6pF ~ 50pF	
Shunt Capacitance C0	5pF max.	
Aging	±3ppm/year max	Temp. Tolerance at 25°C± 5°C (ppm)
Storage Temperature	-55°C - +125°C	-20°C ~ +70°C standard ±30; available ±10 ~ ±50
Drive Level	100µW max. (300µW on request)	-40°C ~ +85°C standard ±50; available ±10 ~ ±50
RoHS	compliant	-40°C ~ +100°C on request
Contents Of Reel	3000 pcs	-40°C ~ +125°C on request

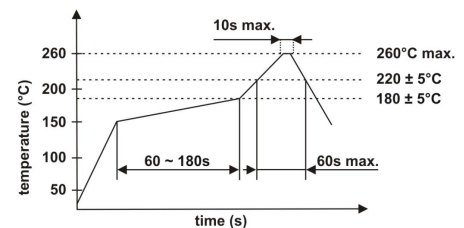
Drawing (mm)



Tape dimension (mm)



Soldering profile



Order code

Q	- 20.000000M	- HC2520/4	- F	- 30	- 30	- D	- 12	- TR
Part	Frequency	Package	Mode of oscillation	Frequency tolerance	Temperature tolerance	Temperature range	Load capacitance	Option
Q=Quartz	M=MHz	HC2520/4	F=fund.	±ppm (25°C)	±ppm (Temp. range)	A= 0°C ~ +70°C B= -10°C ~ +60°C C= -10°C ~ +70°C D= -20°C ~ +70°C E= -40°C ~ +85°C F= -40°C ~ +105°C G= -40°C ~ +125°C	pF	TR=Tape and reel X=Special options