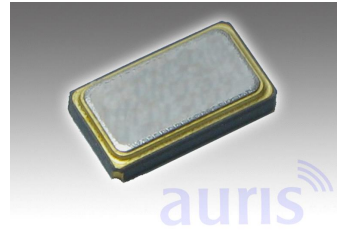


Features HC Series

- SMD ceramic enclosures
- High reliability seam welded seal
- Frequency up to 200 MHz
- Ultrathin profile

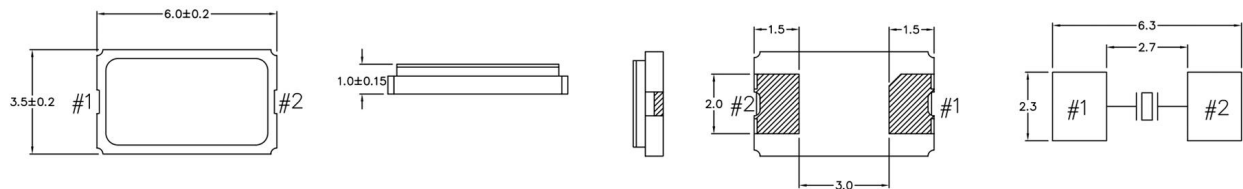


HC6035/2

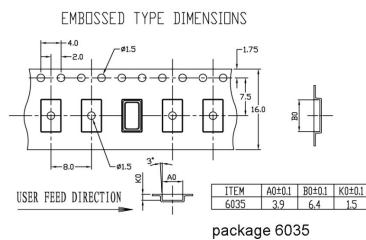
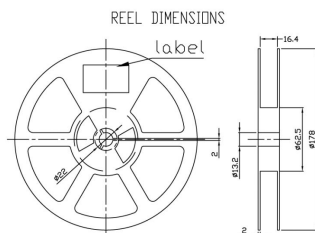
Specification

Type	HC6035/2	ESR max.
Frequency Range fundamental	7,000MHz ~ 54,000 MHz (AT cut)	7,0MHz ~ 12,0MHz = 100 Ohm
Frequency Range over tone	40,000MHz ~ 200,000MHz (AT cut)	12,1MHz ~ 16,0MHz = 60 Ohm
Frequency Tolerance at 25°C±5°C	standard ±30ppm; available ±5 ~ ±50ppm	16,1MHz ~ 25,0MHz = 50 Ohm
Temperature Range	0°C ~ +70°C, or order code	25.1MHz ~ 30,0 MHz = 35 Ohm
Load Capacitance CL	standard 16pF; available 8pF ~ 32pF, SR	30,1MHz ~ 54MHz = 25 Ohm
Shunt Capacitance C0	7pF max.	40,0MHz ~ 200,0MHz = 80 Ohm (3.O.T)
Aging	±3ppm/year max	
Storage Temperature	-55°C - +125°C	Temp. Tolerance (ppm)
Drive Level	200µW max.	-20°C ~ +70°C standard ±30 available ±10 ~ ±50
RoHS	compliant	-40°C ~ +85°C standard ±50 available ±20 ~ ±50
Contents Of Reel	1000 pcs	

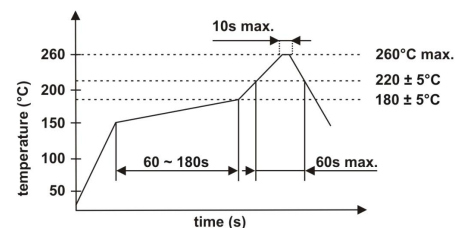
Drawing (mm)



Tape dimension (mm)



Soldering profile



Order code

Q	- 20.000000M	- HC6035/2	- F	- 30	- 30	- D	- 16	- TR
Part	Frequency	Package	Mode of oscillation	Frequency tolerance	Temperature tolerance	Temperature range	Load capacitance	Option
Q=Quartz	M=MHz	HC6035/2	F=fund.	±ppm	±ppm	A= 0°C ~ +70°C B= -10°C ~ +60°C C= -10°C ~ +70°C D= -20°C ~ +70°C E= -40°C ~ +85°C F= -40°C ~ +105°C G= -40°C ~ +125°C	pF SR=series	TR=Tape and reel X=Special options
		/2 = 2 pads	3=3.OT	(25°C)	(Temp. range)			