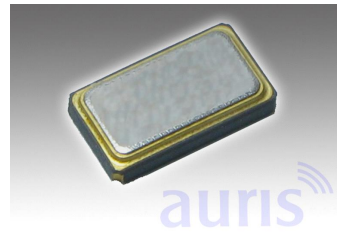


Features HC Series

- SMD ceramic enclosures
- High reliability seam welded seal
- Frequency up to 200 MHz
- Ultrathin profile

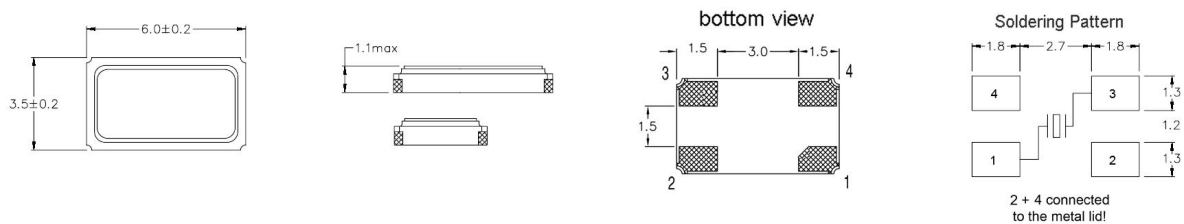


HC6035/4

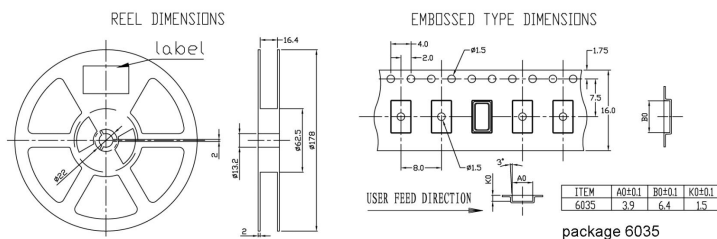
Specification

| Type | HC6035/4 | ESR max. |
|---------------------------------|---|--|
| Frequency Range fundamental | 7,000MHz ~ 54,000 MHz (AT cut) | 7,0MHz ~ 12,0MHz = 100 Ohm |
| Frequency Range over tone | 40,000MHz ~ 200,000MHz (AT cut) | 12,1MHz ~ 16,0MHz = 60 Ohm |
| Frequency Tolerance at 25°C±5°C | standard ±30ppm; available ±5 ~ ±50ppm | 16,1MHz ~ 25,0MHz = 50 Ohm |
| Temperature Range | 0°C ~ +70°C, or order code | 25.1MHz ~ 30,0 MHz = 35 Ohm |
| Load Capacitance CL | standard 16pF; available 8pF ~ 32pF, SR | 30,1MHz ~ 54MHz = 25 Ohm |
| Shunt Capacitance C0 | 7pF max. | 40,0MHz ~ 200,0MHz = 80 Ohm (3.O.T) |
| Aging | ±3ppm/year max | |
| Storage Temperature | -55°C - +125°C | Temp. Tolerance (ppm) |
| Drive Level | 200µW max. | -20°C ~ +70°C standard ±30 available ±10 ~ ±50 |
| RoHS | compliant | -40°C ~ +85°C standard ±50 available ±20 ~ ±50 |
| Contents Of Reel | 1000 pcs | |

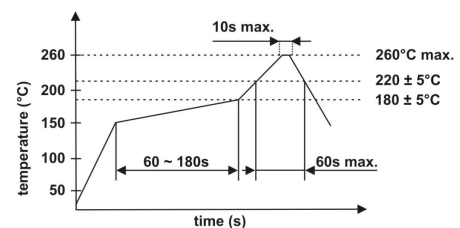
Drawing (mm)



Tape dimension (mm)



Soldering profile



Order code

| Q | - 20.000000M | - HC6035/4 | - F | - 30 | - 30 | - D | - 16 | - TR |
|----------|--------------|-------------|---------------------|---------------------|-----------------------|-------------------|------------------|-------------------|
| Part | Frequency | Package | Mode of oscillation | Frequency tolerance | Temperature tolerance | Temperature range | Load capacitance | Option |
| Q=Quartz | M=MHz | HC6035/4 | F=fund. | ±ppm | ±ppm | A= 0°C ~ +70°C | pF | TR=Tape and reel |
| | | /4 = 4 pads | 3=3.OT | (25°C) | (Temp. range) | B= -10°C ~ +60°C | SR=series | X=Special options |
| | | | | | | C= -10°C ~ +70°C | | |
| | | | | | | D= -20°C ~ +70°C | | |
| | | | | | | E= -40°C ~ +85°C | | |
| | | | | | | F= -40°C ~ +105°C | | |
| | | | | | | G= -40°C ~ +125°C | | |