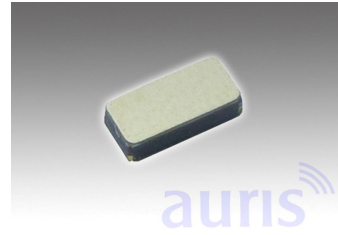


Features

- Low resistance
- Surface mount
- High performance/cost ratio
- Excellent vibration & shock resistance

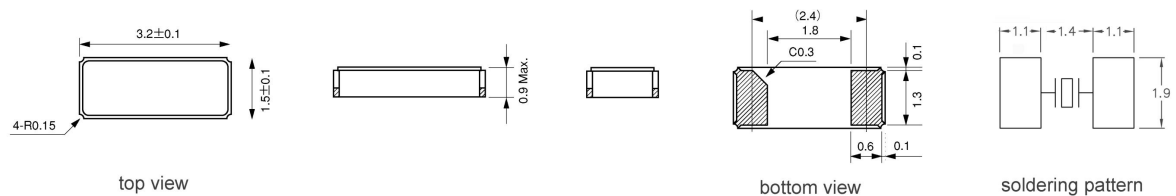


LR3215

Specification

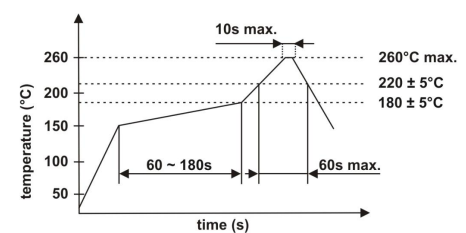
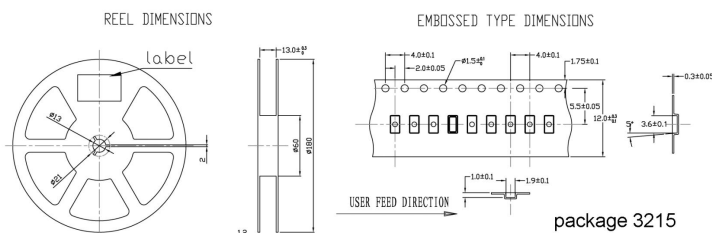
Type	LR3215	ESR max.
Frequency Range fundamental	32,768KHz	32,768KHz = 50 kOhm max.
Frequency Range over tone	-	
Frequency Tolerance at 25°C±5°C	standard ±20ppm, available ±10ppm ~ ±50ppm	
Temperature Range	0°C ~ +70°C, or order code	
Load Capacitance CL	standard 12,5pF, available 7pF, 9pF, 12,5pF	
Shunt Capacitance C0	2pF max.	
Aging	±3ppm/year max.	
Storage Temperature	-55°C - +125°C	Temp. Coefficient at 25°C± 5°C (ppm)
Drive Level	1μW max.	-0,034±0,006ppm/°C² max.
RoHS	compliant	
Contents Of Reel	3000 pcs	

Drawing (mm)



Tape dimension (mm)

Soldering profile



Order code

Q	- 32.768000k	- LR3215	- 20	- E	- 12.5	- TR
Part	Frequency	Package	Frequency tolerance	Temperature range	Load capacitance	Option
Q=Quartz	k=kHz	LR3215	±ppm (25°C)	A= 0°C ~ +70°C B= -10°C ~ +60°C C= -10°C ~ +70°C D= -20°C ~ +70°C E= -40°C ~ +85°C	12,5 pF 9 pF 7 pF	TR=Tape and reel X=Special options